

# Dublin High School

## Phase 2A Humanities/Library/Admin



### **Project Team:**

**Architect:** Aedis Architects  
**Project Manager:** Rick Kendrick  
**Contractor:** Demolition - Randazzo  
Construction - Bobo Construction

### **Project Scope:**

The Phase 2A Project will add 47 new classrooms which include Art, Social Studies, English, Foreign Language, Special Education, and computer labs, with department offices and collaborative learning spaces. The project also includes a new administration building and modernization of the existing library.

### **Project Status:**

The staff parking lot has been paved and the contractors are 80% complete with site utilities. Wood framing of the Art, Administration and Library buildings is complete and mechanical, electrical and plumbing are currently being installed. The Humanities building structural steel is 50% complete and the mechanical, electrical and plumbing is currently being installed. The project is anticipated to be complete for the winter 2011 semester.

<b>Design Start:</b>	Spring	2007
<b>DSA Permit Approval:</b>	Late Summer	2008
<b>Construction Start:</b>	Late Winter	2009
<b>Completion:</b>	Winter	2011

# Dublin High School

## Phase 2B Sports Complex Project



### Project Team:

<b>Architect:</b>	Aedis Architects
<b>Project Manager:</b>	Rick Kendrick
<b>Contractor:</b>	Reeve-Knight

### Project Scope:

The Sports Complex Project includes a new 27,772 square foot gym type athletic facility with bleacher seating for 1,800 fans and bleacher and floor seating capacity of 2,200. The sports complex includes a concession area, ticket booth, and new team rooms with a locker capacity of 240. The sports complex is enhanced by the adjacent new stadium and expanded parking facilities.

### Project Status:

The construction documents were approved by DSA spring 2009. The project successfully bid within budget spring 2009. Construction began spring 2009 and is anticipated to be complete summer 2010. The contractor has completed the building pad and the underground utilities.

<b>Design Start:</b>	Spring	2007
<b>DSA Permit Approval:</b>	Spring	2009
<b>Construction Start:</b>	Spring	2009
<b>Completion:</b>	Summer	2010

# Dublin High School

## Phase 3A Cafeteria Project



### **Project Team:**

<b>Architect:</b>	Aedis Architects
<b>Project Manager:</b>	Rick Kendrick
<b>Contractor:</b>	TBD

### Project Scope:

The Cafeteria Project will include a new food preparation kitchen, cafeteria food service area, an adjacent outdoor dining area, new culinary academy classrooms, and a teacher's dining area. The project includes new construction and modernization of an existing building on campus.

### Project Status:

Adjustments to the cafeteria project schedule have been made in order to minimize operational impact to the campus. Construction documents have been submitted to DSA and are expected to be approved by fall 2009. Construction is anticipated to start when Phase 2A is complete.

<b>Design Start:</b>	Fall	2007
<b>DSA Permit Approval:</b>	Fall	2009
<b>Construction Start:</b>	Winter	2011
<b>Completion:</b>	Winter	2012



# Dublin High School

## Phase 3B Performing Arts Project



### Project Team:

<b>Architect:</b>	Aedis Architects
<b>Project Manager:</b>	Rick Kendrick
<b>Contractor:</b>	TBD

### Project Scope:

This project will include new construction and modernization of the existing Building G. The scope of this project includes a 500 seat theater, dressing rooms, scenery shop, band classroom, choir classroom, practice rooms, drama classroom, and a video production classroom.

### Project Status:

Adjustments to the Performing Arts project schedule have been made in order to minimize educational impacts to the campus. Construction is anticipated to start after the completion of the 3A Phase. The project is presently in the schematic stages of design.

<b>Design Start:</b>	Spring	2009
<b>DSA Permit Approval:</b>	Fall	2010
<b>Construction Start:</b>	Winter	2011
<b>Completion:</b>	Summer	2012

# Dublin High School

## Phase 4 Courtyard / Industrial Arts / Gymnasium Project



### Project Team:

**Architect:** Aedis Architects  
**Project Manager:** Rick Kendrick  
**Contractor:** TBD

### Project Scope:

The scope of this phase will include modernizing the existing gym, completing the courtyard/quad, flat work/landscaping, and modernizing the industrial arts building.

### Project Status:

This project is presently scheduled to start design development in summer 2009.

<b>Design Start:</b>	Possible Summer	2009
<b>DSA Permit Approval:</b>	Possible Fall	2010
<b>Construction Start:</b>	Possible Winter	2011
<b>Completion:</b>	Possible Summer	2012

## Dublin High School

### Phase 1B Math and Science Buildings Project



#### **Project Team:**

<b>Architect:</b>	Aedis Architects
<b>Project Manager:</b>	Rick Kendrick
<b>Contractor:</b>	Flintco

#### **Project Scope:**

The Math/Science Project consists of 70,000 square feet of new classrooms and support space. The project includes 16 math classrooms, 12 science classrooms, 5 special education classrooms with support space, centralized small group instruction space, and a new expanded student parking lot.

#### **Project Status:**

The Math/Science Project started on schedule and then experienced steel fabrication difficulties which were resolved, and the project completed in fall of 2008 on schedule for the revised completion date. Students and staff enjoyed their first day of instruction in the new facility fall 2008.

<b>Design Start:</b>	Spring	2005
<b>DSA Permit Approval:</b>	Winter	2007
<b>Construction Start:</b>	Spring	2007
<b>Completion:</b>	Fall	2008



# Dublin High School

## Phase 1A Track and Field Improvements Project



### Project Team:

<b>Architect:</b>	Aedis Architects
<b>Project Manager:</b>	Rick Kendrick
<b>Contractors:</b>	Interstate Grading & Paving Southern Bleacher Meehlis Modular

### Project Scope:

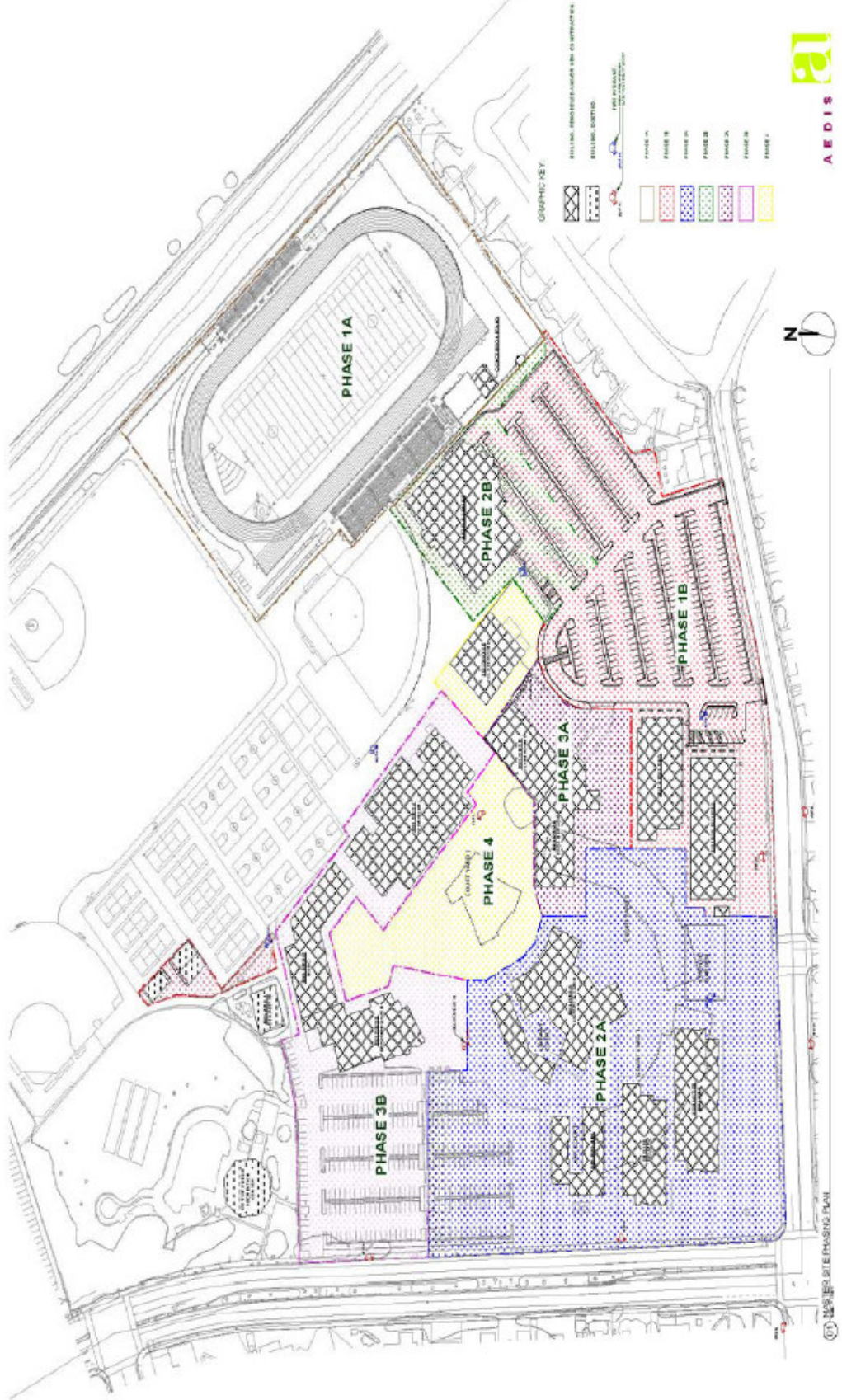
Construction of a new all-weather track and field, new concession booths, announcers booth, public restrooms, new stadium entrance plaza, new ticket booth/entry gate, new bleachers, and new stadium lighting.

### Project Status:

The Track and Field Improvements Project was completed fall 2006 as planned.

<b>Design Start:</b>	Spring	2005
<b>DSA Permit Approval:</b>	Winter	2005
<b>Construction Start:</b>	Spring	2006
<b>Completion:</b>	Fall	2006

# DUBLIN HIGH SCHOOL MASTER PLAN PHASING



October 2008